

SHINC



T Y R E S

Journey never ends...



A Product of SHAHPURI INDUSTRIES

Company Profile

"SHINCO" is a popular brand of SHAHPURI INDUSTRIES, established in 1969, one of the India's leading Tyre manufacturer & exporter. Ever since its inception, "SHAHPURI" has always set new challenges for itself and has a reputed name in the Tyres Industry for being a prominent supplier of comprehensive range of Automobile Tyres & Butyl Inner Tubes. SHAHPURI enjoys a strong corporate brand image not just at India but also has successfully established itself in markets like South & Central America, Europe, Africa, Far Eastern, Gulf, Sri Lanka and parts of C.I.S. Shahpuri is the outcome of determination and disciplines to achieve a highest level of quality of its tyres, which may gain your confidence by way of their engineering workmanship & stringent quality controls.

In an ever growing pursuit of increasing our product range, Shahpuri added another feather to its cap by adding exhaustive range of Top Quality of Chinese Auto Tyres to the Product Portfolio, in addition to our INDIAN Tyres. SHINCO manufactured on sophisticated & advanced technology equipments bear International Quality Standard Certification like ISO, ISO-TS, DOT, ECE, SASO, SONCAP, LATU etc. By virtue of established manufacturing set-up & outstanding network at Qingdao China, the advanced technical skills and thorough professionalism in all fields, our global patrons have recognised us out rightly. The 3 most important pre-requisite of Tyre Trade i.e., Superior Quality, Reasonable Pricing & Timely Delivery, are taken full care of at SHAHPURI by its highly qualified & efficient workforce, which makes sure that all 3 are met.

We break the conventions and tie ourselves up with innovations and ultra-modern techniques. SHAHPURI believes in training its man power and update them with the latest trends in the industry. This aspect is becoming increasingly significant to have edge over our competitors. Your spontaneous trust and confidence is assured to be maintained always, Irrespective of how the environments influence your choice, we stand committed to become your most reliable supplier for all/ any of your Auto Tyre requirements and, this Tyre Catalogue is the first step in that direction.

We welcome your specific requirement enquiries and keenly look forward towards having meaningful interaction.

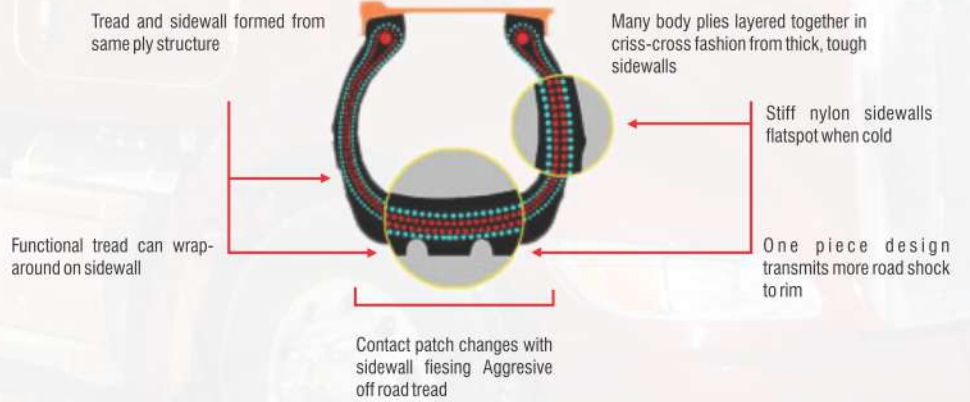


INDIAN BIAS CROSS PLY AUTO TYRE SERIES

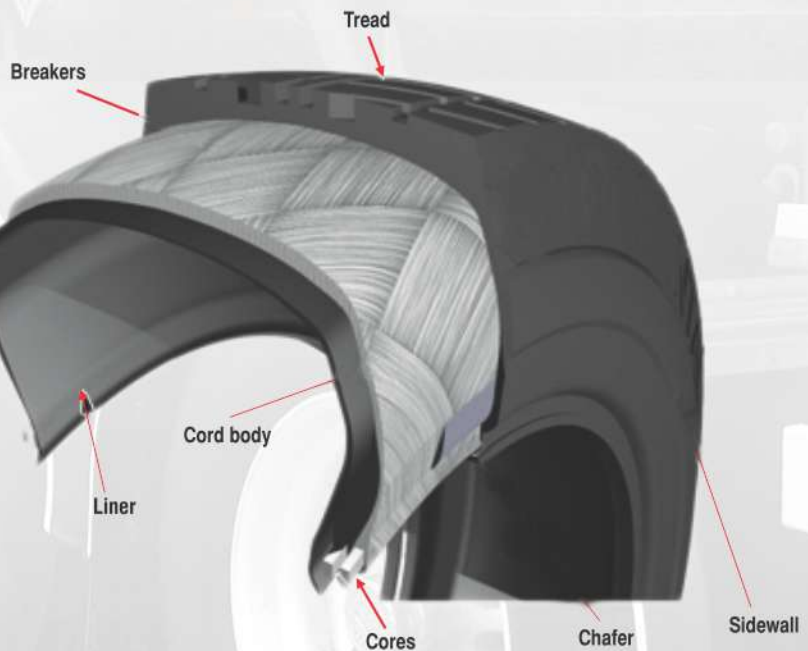
SHINC

T Y R E S *Journey never ends...*

Bias-Ply



Bias Crossply Construction





TRUCK/BUS AND LIGHT TRUCK TYRES



STB-35
9.00-20/14,16,10.00-20/16,18



ST-336
9.00 20,10.00 20



XTRA TUF 007
10.00-20/16,18



ST-645
5.00-12/6,8,6.00-12/4



ST-699
4.50-10/8



OTR AND INDUSTRIAL TYRES



SOT-105
15.5-25/8,15.5-25/10,15.5-25/12,
17.5-25/12,17.5-25/16,17.5-25/20,
20.5-25/12,20.5-25/16,20.5-25/12



SIN-235
18-7-8/10,18-7-8/12,18-7-8/14,18-7-8/16,
4.00-8/10,5.00 - 8/8,5.00 - 8/10,6.00-9/12,
6.50-10/10,6.50-10/12,7.00-12/12,7.00-12/14,
7.00-12/14,8.25-15/12,8.25-15/14,28.9-15/12,
28.9-15/14,250-15/16,250-15/18,300-15/20



ST-465
10-16.5/8,10-16.5/10,12-16.5/8,
12-16.5/10,12-16.5/12



ST-456
10-16.5/8,10-16.5/10,12-16.5/8,
12-16.5/10,12-16.5/12



ST-402
13.00-24/12,13.00-24/16,
14.00-24/12,14.00-24/16



ST-411
10.5/80- 18/8,10.5/80-18/10,
12.5/80-18/10,12.5/80-18/12



SOT-R4
16.9-24/8,16.9-24/10,17.5L-24/8,
17.5L-24/10,19.5L - 24/10,19.5L - 24/12



ST-68
13.5-16.1/10,13.5-16.1/12



TWO WHEELER AND THREE WHEELER TYRES



ST-798
3.00-18/4,6,3.00-19/6



ST-771
2.75-18/4,6



ST-699-A
2.75-18/4,6



ST-301
26x2.125



LCV TYRES



ST-537
7.00-16/8,10,12,14,6.70-15/8,
7.00-15/12



ST-681
7.00-15/12,7.00-16/8,10,12,14



ST-564
7.50-16/12,14,16,8.25-16/16



ST-519
6.00-16/8



XPL-672
7.50-16/12,14,16,8.25-16/16



ST-663
7.50-16/12,14,16



ST-501
6.00-14/6,6.00-14/8,6.50-14/8



ST-519-A
7.50-15/12,14



ST-510
7.50-16/12,14,16,6.70-15/8



ST-609
6.00-14/6,8



SAMSON-654
7.00-15/12,7.50-15/12,14,7.00-16/8,
10,12,14, 7.50-16/12,14,16



ST-555
7.50-16/12,14,16



ST-339
F78-15/6,8



ST-870
6.00-16/8



ST-852
F78-15/6,8



ST-519-B
4.50-10/8,5.00-10/4,4.50-12/6,8,
5.00-12/6,8,6.00-12/4



AGRICULTURAL TYRES



SAG-623 (R-1)

12.4-24/8,12,14.9-24/8,12,16.9-26/6,
10, 18.4-26/8,10,12 14.9-28/8,10,12,
16.9-28/8,10,18.4-28/8,10,12,16.9-30/8,
10,12,18.4-34/8,10,12,20.8-34/8,10,
16.9-38/6,8,18.4-38/8,10,12



ST-348

18.4-30/8,10,12,16.9-34/8,10



ST-039

13.6-26/8,14.9-26/6,10,12.4-28/8,
10,12,13.6-28/8,10,12



ST-303

8.3-24/4,6.0012/4,9.5L-24/4,6



ST-213

14L-16.1/10,12,11.00-16/8,12,
10.00-16/6,8,7.50-16/6,8,
6.50-16/4,6,6.00-16/8,6,5.50-16/4,
6,4.00-12/4,5,0.00-15/4



ST-276

6.00-16/6,8



ST-258

5.50-16/4,6,6.00-16/6,8,6.50-20/6,8



ST-285

9.5L-15/6,8,11L-15/8,10,7.50-18/6



ST-906

6.00-16/16



ST-915

9.00-16/16



ST-177

7.50-16/8,10



ST-141

10.0/75-15.3/12,14,11.5/80-15.3/10,
12,14,12.5/80-15.3/12,14



AG-72 (R-4)

550/16-22.5/12,16



ST-105

9.5L-14/4,6,8,9.5L-15/6,8,12, 10.00-15/8,
10,12,11L-15/8,10,12, 11L-16/8/10,12.5L-15/10,
12,12.5L-16/8,12,14,16.5L-16.1/10,12,14,
21.5-16.1/12,14,16,7.50-16/8,10,5.00-19/6,
6.00-19/8,7.00-19/10,8.00-19/10,6.00-20/8



ST-375

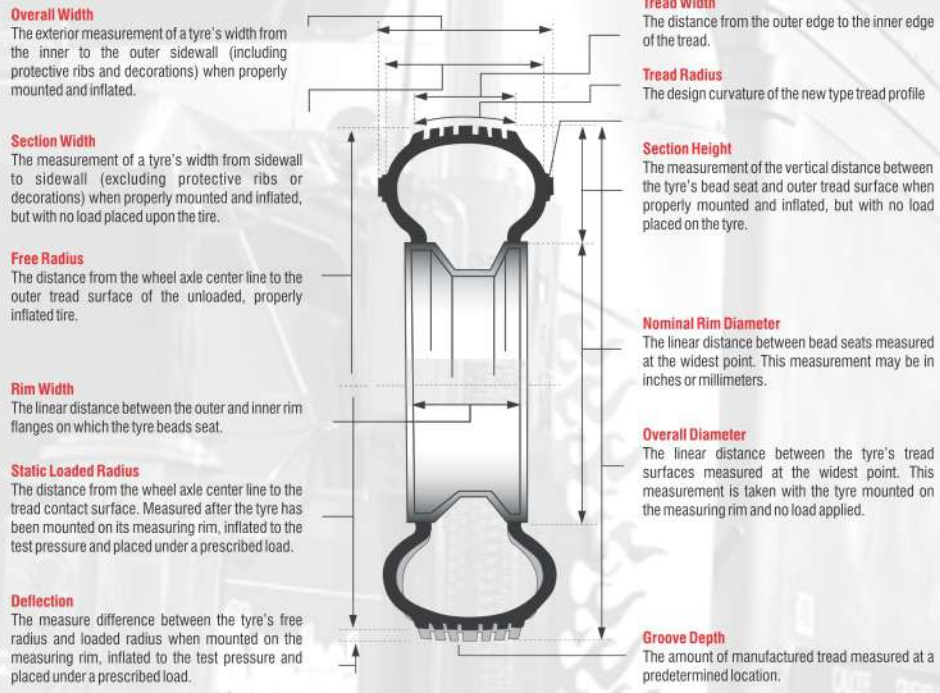
15.5/80-24/10,12,14,405/70-20/14

CHINESE STEEL RADIAL TYRE SERIES

STRUCTURE DIAGRAM

DESCRIPTION OF TYRE DIMENSIONS

The following diagram offers explanations of key dimensional information relevant to truck tyres.



RADIAL TYRE CONSTRUCTION

A tyre is designed to contain the air pressure that carries the weight of the vehicle and load. Radial tyres consist of the sidewall, tread, shoulder, and bead areas. Unique combinations of rubber compounds and innovative construction methods cause all of the tyres' individual elements to adhere to their surrounding components resulting in a single product. The technological advancements in SHINCO tyres offer better handling, ride, comfort, traction, treadwear, and fuel economy than ever before.



SC-29



Size	Load Index	Speed Ratin	Rim	Section Width (mm)	Overall Diameter (mm)	Max Load		Max Pressure	
						kgs	lbs	kpa	psi
215/35R18 XL	84	W	7 1/2 J	218	607	500	1102	340	50
215/40R16 XL	86	W	7 1/2 J	218	578	530	1168	340	50
205/40R17 XL	84	W	7 1/2 J	212	596	500	1102	340	50
215/40R17 XL	87	W	7 1/2 J	218	604	545	1201	340	50
225/40R18 XL	92	W	8J	230	637	630	1389	340	50
235/45R17 XL	97	W	8J	236	644	730	1609	340	50
245/40R18 XL	97	W	8 1/2 J	248	653	730	1609	340	50
205/45R17 XL	88	W	7J	206	616	560	1235	340	50
215/45R17 XL	91	W	7J	213	626	615	1356	340	50
225/45R17 XL	94	W	7 1/2 J	225	634	670	1477	340	50
245/45R17 XL	99	W	8J	243	652	775	1709	340	50
225/45R18 XL	95	W	7 1/2 J	225	659	690	1521	340	50
245/45R18 XL	100	W	8J	243	677	800	1764	340	50
255/45R18 XL	103	W	8 1/2 J	255	687	875	1929	340	50
205/50R16	87	W	6 1/2 J	214	612	545	1201	300	44
205/50R16	87	V	6 1/2 J	214	612	545	1201	300	44
205/50R17 XL	93	W	6 1/2 J	214	638	650	1433	340	50
235/50R18	97	W	7 1/2 J	245	693	730	1609	300	44
205/55R16	91	W	6 1/2 J	214	632	615	1356	300	44
215/55R16 XL	97	W	7J	226	642	730	1609	340	50
215/55R16 XL	97	V	7J	226	642	730	1609	340	50
225/55R16 XL	99	V	7J	233	654	775	1709	340	50
225/55R16 XL	99	W	7J	233	654	775	1709	340	50
215/55R17 XL	98	W	7J	226	668	750	1653	340	50

SC-32



Size	Load Index	Speed Ratin	Rim	Section Width (mm)	Overall Diameter (mm)	Max Load		Max Pressure	
						kgs	lbs	kpa	psi
235/75R15	105	T	STD	235	733	2039	6.5	340	50
265/75R16	116	T	STD	267	804	2756	7.5	340	50
225/70R16	103	T	STD	228	722	1929	6.5	340	50
235/70R16	106	T	STD	240	736	2094	7	340	50
245/70R16	107	T	STD	248	750	2149	7	340	50
255/70R16	111	T	STD	260	764	2403	7.5	340	50
265/70R16	112	T	STD	272	778	2469	8	340	50
245/70R17	110	T	STD	248	776	2335	7	340	50
265/70R17	115	T	STD	272	804	2680	8	340	50
235/65R17	104	T	STD	240	738	1985	7	340	50
245/65R17	107	T	STD	248	750	2150	7	340	50

SW-26



Size	Load Index	Speed Rating	Load Range	Section Width (mm/in.)	Overall Diameter	Max Load (lbs.)	MEAS. Rim Width (INS.)	Tread Depth 32nd Inch
155/70R13	75	T	SL	157	548	853	4	13
155/80R13	79	T	SL	157	578	963	4	13
175/70R13	82	T	SL	177	546	1,047	5	13
165/70R13	79	T	SL	170	562	963	5	13
175/70R14	84	T	SL	177	602	1,102	6	13
185/70R14	88	T	SL	189	616	1,235	6	13
175/65R14	82	T	SL	177	584	1,047	5	13
185/65R14	86	T	SL	189	596	1,168	6	13
185/60R14	82	T	SL	189	578	1,047	6	13
185/65R15	88	T	SL	189	621	1,235	6	13
195/65R15	91	T	SL	201	635	1,356	6	13
205/65R15	94	T	SL	209	647	1,477	6	13
195/60R15	88	T	SL	201	615	1,235	6	13
205/55R16	91	T	SL	214	632	1,356	7	13
185R 14C	102/100	Q	D(8PR)	188	650	1874/1764	6	13
195/70R15C	104/102	Q	D(8PR)	201	655	1984/1874	6	13
255/70R15C	112/110	Q	D(8PR)	228	697	2469/2337	7	13

SC-22



SC-98



SCR-18

Size	Load Index	Speed Ratin	Rim	Section Width (mm)	Overall Diameter (mm)	Max Load		Max Pressure	
						Kgs	Lds	kPa	Psi
195/50R15	82	H	6 J	475	1047	300	44	201	577
195/50R15	82	V	6 J	475	1047	300	44	201	577
185/55R14	80	H	6 J	450	992	300	44	194	560
185/55R15	82	H	6 J	475	1047	300	44	194	585
185/55R15	82	V	6 J	475	1047	300	44	194w	585
195/55R15	85	H	6 J	515	1135	300	44	201	595
195/55R15	85	V	6 J	515	1135	300	44	201	595
205/55R16	91	H	6 1/2 J	615	1356	300	44	214	632
205/55R16	91	V	6 1/2 J	615	1356	300	44	214	632
175/60R14	79	H	5 J	437	963	300	44	177	566
185/60R14	82	H	5 1/2 J	475	1047	300	44	189	578
195/60R14	86	H	6 J	530	1168	300	44	201	590
195/60R15	88	H	6 J	560	1235	300	44	201	615
195/60R15	88	V	6 J	560	1235	300	44	201	615
205/60R15	91	H	6 J	615	1356	300	44	209	627
205/60R15	91	V	6 J	615	1356	300	44	209	627
205/60R16	92	H	6 J	630	1389	300	44	209	652
205/60R16	92	V	6 J	630	1389	300	44	209	652
215/60R16	95	H	6 1/2 J	690	1521	300	44	221	664
215/60R16	95	V	6 1/2 J	690	1521	300	44	221	664
215/60R16 XL	99	V	6 1/2 J	775	1709	340	50	221	664
225/60R16	98	H	6 1/2 J	750	1653	300	44	228	676
225/60R16	98	V	6 1/2 J	750	1653	300	44	228	676
225/60R16 XL	102	V	6 1/2 J	850	1874	340	50	228	676
185/65R14	86	T	5 1/2 J	530	1168	300	44	189	596
185/65R14	86	H	5 1/2 J	530	1168	300	44	189	596
185/65R14	88	T	5 1/2 J	560	1235	300	44	189	621
185/65R15	88	H	5 1/2 J	560	1235	300	44	189	621
195/65R15 XL	95	T	6 J	690	1521	340	50	201	635
195/65R15	91	H	6 J	615	1356	300	44	201	635
195/65R15	91	V	6 J	615	1356	300	44	201	635
205/65R15	94	H	6 J	670	1477	300	44	209	647
205/65R15	94	V	6 J	670	1477	300	44	209	647
215/65R15	96	H	6 1/2 J	710	1565	300	44	221	661
215/65R16	98	H	6 1/2 J	750	1653	300	44	221	686
185/60R15	84	H	5 1/2 J	500	1102	300	44	189	603
185/60R15 XL	88	H	5 1/2 J	560	1235	340	50	189	603
195/55R16	87	H	6 J	545	1201	300	44	201	620
195/55R16	87	V	6 J	545	1201	300	44	201	620
195/50R16	84	H	6 J	500	1102	300	44	201	602
195/50R16	84	V	6 J	500	1102	300	44	201	602
185/50R14	77	V	6 J	412	908	300	44	194	542

ST-19



Size	Ply-Rating	Speed Range	Standard Rim	Load Index	Inflation Pressure(kpa)	Load Capacity (kg.)		Section Width (mm)	Diameter (mm)
						Single	Dual		
11R22.5	16	M	8.25	146/143	830	3000	2725	279	1054
12R22.5	18	M	9.00	152/148	850	3550	3150	300	1084
13R22.5	18	K	9.75	154/151	830	3750	3450	320	1124
215/75R17.5	16	J	6.00	135/133	865	2180	2060	767	211
225/75R17.5	16	M	6.75	129/127	830	1850	1750	784	224
275/75R17.5	16	M	8.25	148/145	900	3150	2900	958	276
295/80R22.5	16	M	9.00	152/148	850	3550	3150	298	1044

ST-882



Size	Ply-Rating	Speed Range	Standard Rim	Load Index	Inflation Pressure(kpa)	Load Capacity (kg.)		Section Width (mm)	Diameter (mm)
						Single	Dual		
7.50R16	14	M	6.00	120/118	770	1500	1320	215	805
8.25R16	14	M	6.5	126/122	670	1700	1500	235	856
8.25R20	14	L	6.5	136/131	840	2240	1980	232	971
9.00R20	16	L	7.0	144/142	900	2800	2650	258	1022
10.00R20	18	L	7.5	149/146	930	3250	3000	273	1053
11.00R20	18	L	8.0	152/149	930	3550	3250	287	1087
12.00R20	20	L	8.5	156/153	930	4000	3650	310	1122
12.00R24	20	L	8.5	160/157	900	4500	4125	313	1226
315/80R22.5	18	M	9.00	154/151	830	3750	3450	314	1075

ST-288



Size	Ply-Rating	Speed Range	Standard Rim	Load Index	Inflation Pressure(kpa)	Load Capacity (kg.)		Section Width (mm)	Diameter (mm)
						Single	Dual		
12.00R24	18	K	8.5	156/153	830	4000	3650	313	1226
12.00R24	20	K		160/157	900	4500	4125		

ST-688



Size	Ply-Rating	Speed Range	Standard Rim	Load Index	Inflation Pressure(kpa)	Load Capacity (kg.)		Section Width (mm)	Diameter (mm)
						Single	Dual		
12R22.5	18	M	9.00	152/148	850	3550	3150	300	1084
13R22.5	18	M	9.75	154/151	830	3750	3450	320	1124
11R22.5	16	M	8.25	146/143	830	3000	2725	279	1054
295/80R22.5	16	M	9.00	152/148	850	3550	3150	298	1044
315/80R22.5	18	M	9.00	154/151	830	3750	3450	314	1075

ST-788



Size	Ply-Rating	Speed Range	Standard Rim	Load Index	Inflation Pressure(kpa)	Load Capacity (kg.)		Section Width (mm)	Diameter (mm)
						Single	Dual		
12R22.5	18	M	9.00	152/148	850	3550	3150	300	1084
11R22.5	18	M	8.25	146/143	830	3000	2725	279	1054
295/80R22.5	16	M	9.00	152/148	850	3550	3150	298	1044

ST-052



Size	Ply-Rating	Speed Range	Standard Rim	Load Index	Inflation Pressure(kpa)	Load Capacity (kg.)		Section Width (mm)	Diameter (mm)
						Single	Dual		
10.00R20	18	L	7.5	149/146	930	3250	3000	273	1053
11.00R20	18	L	8.0	152/149	930	3550	3250	287	1087
12.00R20	20	L	8.5	156/153	930	4000	3650	310	1122

ST-872



Size	Ply-Rating	Speed Range	Standard Rim	Load Index	Inflation Pressure(kpa)	Load Capacity (kg.)		Section Width (mm)	Diameter (mm)
						Single	Dual		
10.00R20	18	D	7.5	149/146	930	3250	3000	273	1053
11.00R20	18	D	8.0	152/149	930	3550	3250	287	1087
12.00R20	20	D	8.5	156/153	930	4000	3650	310	1122

ST-191



Size	Ply-Rating	Speed Range	Standard Rim	Load Index	Inflation Pressure(kpa)	Load Capacity (kg.)		Section Width (mm)	Diameter (mm)
						Single	Dual		
11.00R22	18	L	8.0	154/151	930	3750	3450	293	1135
11R22.5	18	M	8.25	146/143	830	3000	2725	279	1054
12R22.5	18	M	9.00	152/148	850	3550	3150	300	1084
13R22.5	18	M	9.75	154/151	830	3750	3450	320	1124
295/50R22.5	16	M	9.00	152/148	850	3550	3150	298	1044

ST-682



Size	Ply-Rating	Speed Range	Standard Rim	Load Index	Inflation Pressure(kpa)	Load Capacity (kg.)		Section Width (mm)	Diameter (mm)
						Single	Dual		
11.00R22	18	L	8.0	154/151	930	3750	3450	293	1135
11R22.5	16	M	8.25	146/143	830	3000	2725	279	1054
12R22.5	18	M	9.00	152/148	850	3550	3150	300	1084
13R22.5	18	K	9.75	9.0	830	3750	3450	320	1124
315/80R22.5	18	M	9.00	154/151	830	3750	3450	314	1075

ST-108



Size	Ply-Rating	Speed Range	Standard Rim	Load Index	Inflation Pressure(kpa)	Load Capacity (kg.)		Section Width (mm)	Diameter (mm)
						Single	Dual		
11R22.5	18	M	8.25	146/143	830	3000	2725	279	1054
12R22.5	18	M	9.00	152/148	850	3550	3150	300	1084
13R22.5	18	M	9.75	154/151	830	3750	3450	320	1124
295/80R22.5	16	M	9.00	152/148	850	3550	3150	298	1044
315/80R22.5	18	M	9.00	154/151	830	3450	3450	314	1075

ST-88



Size	Ply-Rating	Speed Range	Standard Rim	Load Index	Inflation Pressure(kpa)	Load Capacity (kg.)		Section Width (mm)	Diameter (mm)
						Single	Dual		
11R22.5	18	M	8.25	146/143	830	3000	2725	279	1054
12R22.5	18	M	9.00	152/148	850	3550	3150	300	1084
13R22.5	18	K	9.75	154/151	830	3750	3450	320	1124
295/80R22.5	16	M	9.00	152/148	850	3550	3150	298	1044
315/80R22.5	18	M	9.00	154/151	830	3750	3450	314	1075

ST-969



Size	Ply-Rating	Speed Range	Standard Rim	Load Index	Inflation Pressure(kpa)	Load Capacity (kg.)		Section Width (mm)	Diameter (mm)
						Single	Dual		
10.00R20	18	L	7.5	149/146	930	3250	3000	273	1053
11.00R20	18	L	8.0	152/149	930	3550	3250	287	1087
12.00R20	20	L	8.5	156/153	930	4000	3650	310	1122

ST-298



Size	Ply-Rating	Speed Range	Standard Rim	Load Index	Inflation Pressure(kpa)	Load Capacity (kg.)		Section Width (mm)	Diameter (mm)
						Single	Dual		
10.00R20	18	L	7.5	149/146	930	3250	3000	273	1053
11.00R20	18	L	8.0	152/149	930	3550	3250	287	1087
12.00R20	20	L	8.5	156/153	900	4000	3650	310	1122
12.00R24	20	K	8.5	160/157	900	160	157	313	1226

ST-689



Size	Ply-Rating	Speed Range	Standard Rim	Load Index	Inflation Pressure(kpa)	Load Capacity (kg.)		Section Width (mm)	Diameter (mm)
						Single	Dual		
10.00R20	18	L	7.5	149/146	930	3250	3000	273	1053
11.00R20	18	L	8.0	152/149	930	3550	3250	287	1087
12.00R20	20	L	8.5	156/153	900	4000	3650	310	1122

ST-998



Size	Ply-Rating	Speed Range	Standard Rim	Load Index	Inflation Pressure(kpa)	Load Capacity (kg.)		Section Width (mm)	Diameter (mm)
						Single	Dual		
10.00R20	16	L	7.5	156/153	900	3250	3000	273	1053
11.00R20	18	K	7.5	160/157	900	3550	3250	287	1087
12.00R20	20	L	8.5	156/153	900	4000	3650	310	1122

ST-862



Size	Ply-Rating	Speed Range	Standard Rim	Load Index	Inflation Pressure(kpa)	Load Capacity (kg.)		Section Width (mm)	Diameter (mm)
						Single	Dual		
7.50R16	14	L	6.0	144/142	600	152	148	300	1084
8.25R16	16	M	6.5	128/124	770	1800	1600	235	856
9.00R20	16	L	7.0	144/142	900	2800	2650	258	1022
10.00R20	18	L	7.0	149/146	930	3250	3000	273	1053
11.00R20	18	L	8.0	152/149	930	3550	3250	287	1087
12.00R20	20	L	8.5	156/153	930	4000	3650	310	1122

ST-888



Size	Ply-Rating	Speed Range	Standard Rim	Load Index	Inflation Pressure(kpa)	Load Capacity (kg.)		Section Width (mm)	Diameter (mm)
						Single	Dual		
9.00R20	16	L	7.0	144/142	900	2800	2650	258	1022
10.00R20	18	L	7.5	149/146	930	3250	3000	273	1053
11.00R20	18	L	8.0	152/149	930	3550	3250	287	1087
12.00R20	20	L	8.5	156/153	930	4000	3650	310	1122

ST-058



Size	Ply-Rating	Speed Range	Standard Rim	Load Index	Inflation Pressure(kpa)	Load Capacity (kg.)		Section Width (mm)	Diameter (mm)
						Single	Dual		
10.00R20	18	L	7.5	149/146	930	3250	3000	273	1053
11.00R20	18	L	8.0	152/149	930	3550	3250	287	1087
12.00R20	20	L	8.5	156/153	930	4000	3650	310	1122

ST-868



Size	Ply-Rating	Speed Range	Standard Rim	Load Index	Inflation Pressure(kpa)	Load Capacity (kg.)		Section Width (mm)	Diameter (mm)
						Single	Dual		
10.00R20	16	L	7.5	156/153	900	3250	3000	273	1053
11.00R20	18	K	7.5	160/157	900	3550	3250	287	1087
12.00R20	20	L	8.5	156/153	900	4000	3650	310	1122
235/75R17.5	18	J	6.75	143/141	865	2725	2575	797	233

AG - 566



Size	Ply-Rating	Speed Range	Standard Rim	Load Index	Inflation Pressure(kpa)	Load Capacity (kg.)		Section Width (mm)	Diameter (mm)
						Single	Dual		
235/75R17.5	18	J	6.75	143/141	865	2725	2575	797	233
275/70R22.5	16	L	9.0	146/143	830	3000	2725	1010	298
225/75R17.5	16	M	6.75	129/127	830	1850	1750	784	224
215/75R17.5	16	J	6.0	135/133	865	2180	2060	767	211

AG - 516



Size	Ply-Rating	Speed Range	Standard Rim	Load Index	Inflation Pressure(kpa)	Load Capacity (kg.)		Section Width (mm)	Diameter (mm)
						Single	Dual		
385/65R22.5	20	K	11.75	160	900	4500		1072	389
425/65R22.5	20	J	12.25	164	830	5000		1124	422

ST - 286



Size	Ply-Rating	Speed Range	Standard Rim	Load Index	Inflation Pressure(kpa)	Load Capacity (kg.)		Section Width (mm)	Diameter (mm)
						Single	Dual		
275/70R22.5	16	M	8.25	148/145	900	3150	2900	958	276
385/65R22.5	20	K	11.75	160	900	4500		1072	389
425/65R22.5	20	J	12.25	164	830	5000		1124	422

ST - 958



Size	Ply-Rating	Speed Range	Standard Rim	Load Index	Inflation Pressure(kpa)	Load Capacity (kg.)		Section Width (mm)	Diameter (mm)
						Single	Dual		
11R22.5	18	M	8.25	146/143	830	3000	2725	279	1054
12R22.5	18	M	9.0	152/148	850	3550	3150	300	1084
295/80R22.5	16	M	9.0	152/148	850	152	148	298	1044
315/80R22.5	18	M	9.0	154/151	830	154	151	314	1075

ST - 898



Size	Ply-Rating	Speed Range	Standard Rim	Load Index	Inflation Pressure(kpa)	Load Capacity (kg.)		Section Width (mm)	Diameter (mm)
						Single	Dual		
11R22.5	18	M	8.25	146/143	830	3000	2725	279	1054
12R22.5	18	M	9.0	152/148	850	3550	3150	300	1084
295/80R22.5	16	M	9.0	152/148	850	152	148	298	1044
315/80R22.5	18	M	9.0	154/151	830	154	151	314	1075

ST-01



Size	Ply-Rating	Speed Range	Standard Rim	"Load Index"	Inflation Pressure (kPa)	Load Capacity (kg.)		Section Width (mm)	Diameter
						Single	Dual		
11R24.5	16	M	8.25	149/146	830	3000	3250	279	1104
295/75R22.5	16	M	9.0	146/143	830	2725	3000	298	1014

ST-02



Size	Ply-Rating	Speed Range	Standard Rim	Load Index	Inflation Pressure (kPa)	Load Capacity (kg.)		Section Width (mm)	Diameter
						Single	Dual		
11R22.5	16	M	8.25	146/143	830	2725	3000	279	1054
255/70R22.5	16	M	7.50	140/137	830	2300	2500	255	930
275/70R22.5	16	M	8.25	144/141	830	2575	2800	276	958
285/75R24.5	16	M	8.25	147/144	830	2800	3075	283	1050

ST-D01



Size	Ply-Rating	Speed Range	Standard Rim	Load Index	Inflation Pressure (kPa)	Load Capacity (kg.)		Section Width (mm)	Diameter
						Single	Dual		
11R24.5	16	M	8.25	149/146	830	3000	3250	279	1116
295/75R22.5	16	M	9.0	146/143	830	2725	3000	298	1020

STORAGE

1. Tires must be stored in the dry warehouses at 10°C -30°C temperature and 50%-80% relative humidity, keeping out of the sunshine.
2. In case of storing inner tubes with cover tires in a complete set, the inner tubes should be inflated slightly and applied with talcum powder on the surface.
3. The stands keeping inner tubes and cover tires should be one meter away from the heat sources.
4. To keep the tires together with chemicals such as oils, flammables, acids, alkali, etc. is prohibited.

USAGE GUIDE

1. Pressure

After inflating tires, check inflating valve pad, valve insides, contact area of rim with tire for air leakage. If any, repair and replace in time. In case of excessive or lacking pressure, abnormal deformation will take place in the tire, resulting in shortening of service life of the tires.

2. Loads

Tires load should be consistent with that given by the tire identification. Goods shall be distributed evenly on the vehicle, avoiding unbalanced load.

3. Rim

Tires must be installed on the given type vehicle and the rim with smooth surface and type and size up to specifications. Use of damaged and deformed rims is not allowed.

4. Inner tubes

Tires and vehicle body are supported by atmospheric pressure inside the inner tube. So the inner tube has a tremendous effect on the tire service life. The newly ex-works tires should be provided with new inner tube with the same size. It'd better be for the radial tires to be provided with butyl inner tube.

When mounting the inner tubes, check the inside of the cover for no foreign matters and apply talcum powder on the inner wall of cover tire and the surface of inner tube for being advantageous to the extension of the inner tube. The valve of the inner tube shall be put in the center of the rim valve hole.

5. Assembly

On one axle shaft shall be installed the tires with the same brand, size, structure, ply rating and pattern. The ordinary tires can't be matched together with the radial tires. In installing the tires with directional pattern, keep the tires' rotating direction mark consistent with the riding direction.

6. Interchange of position

The positions of the tires should be interchanged regularly; meanwhile, the covers, inner tubes and rim strips shall be checked fully. To interchange the positions of all tires shall be carried out simultaneously. It should be noted not to change the original rotating direction of the tire.

7. Replacement of tires

At the time of installation of new tires, it'd better change the tires on the entire vehicle; otherwise the new tires shall be installed on the front wheels and rear standby wheel.

8. Vehicles

The abnormal technical conditions of vehicles could cause not only earlier wearing of tires, but also damage of the tires due to unbalanced loading. If finding the signs showing that the tires are worn abnormally, check the defects of the vehicle in time.

9. Driving

Start a vehicle steadily and drive at the uniform speed. Slow down the speed while crossing barriers. To select the way to drive a vehicle shall avoid stabbing the tires. No keeping away from the sharp barrier, slip of tire, hard braking, zagging, etc. would cause earlier damage of tires.

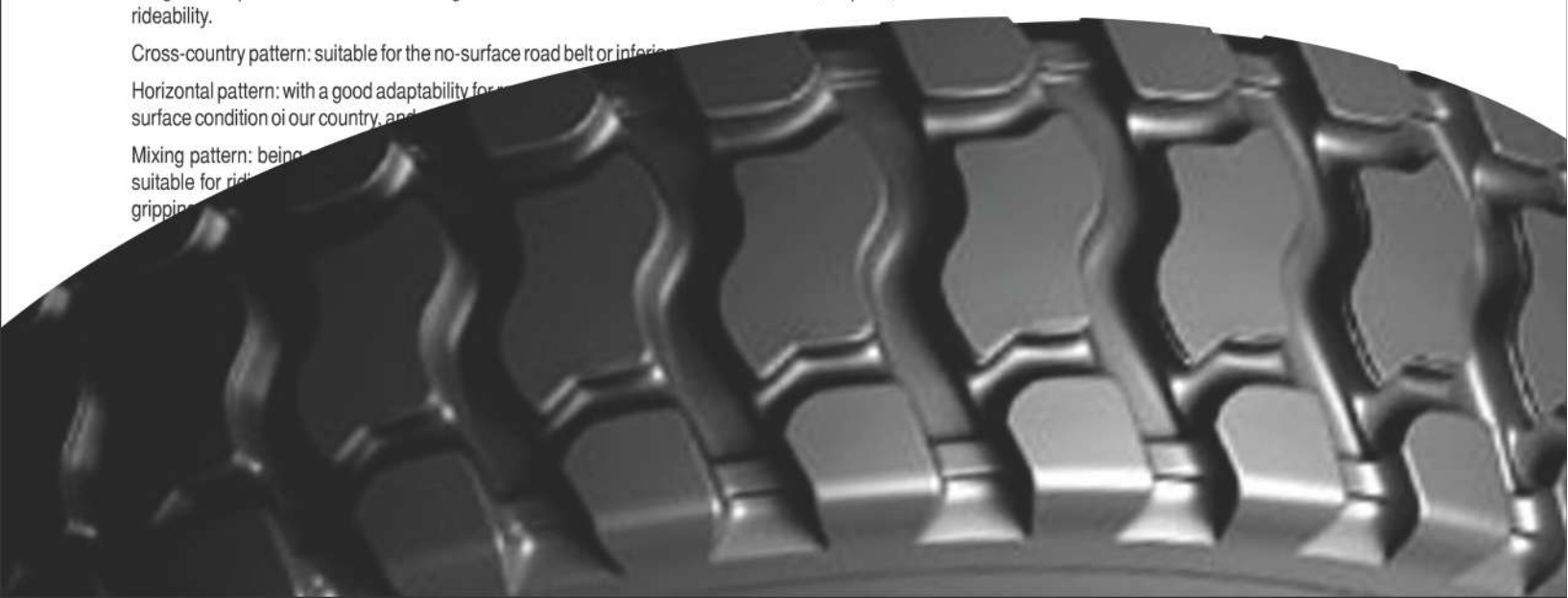
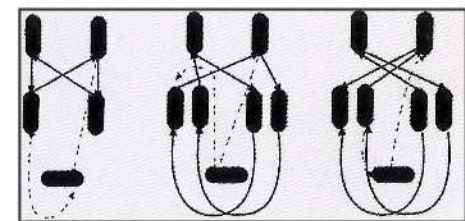
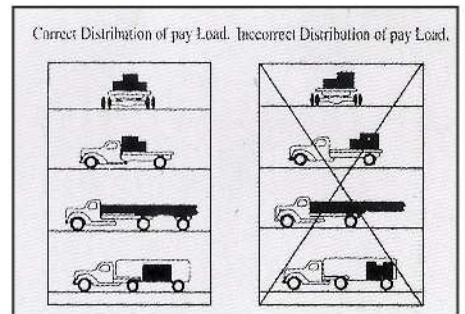
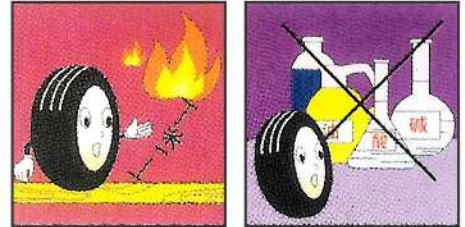
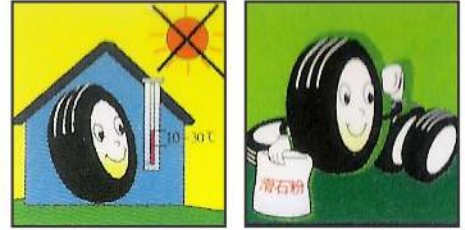
10. Service conditions of vehicle tire patterns

Longitudinal pattern: suitable for the rigid road surface conditions such as cement, asphalt, with better rideability.

Cross-country pattern: suitable for the no-surface road belt or inferior road surface.

Horizontal pattern: with a good adaptability for the road surface condition of our country, and

Mixing pattern: being suitable for riding on the road surface with better gripping





SHINC  Accepted Worldwide
TYRES



SHAHPURI INDUSTRIES

Office : B-XXIX/51/1, Daba Road, G.T. Road, Ludhiana - 141003 (INDIA)

Tel : +91-161-2539489, 2539491, 5052491, 5052492

Fax : +91-161-2542608

Email : shahpuri@shahpuri.com, info@shincoautotyres.com

Website : www.shincoautotyres.com